

CTC

New Student
Celebration

Principal

Mr. Romberger

DAILY SCHEDULE

Half Day Programs

- Half-Day Programs (AM) 8:00 a.m. – 10:25 a.m.
 - Bus drop off at bottom of the hill
 - Bus pick up at bottom of the hill except for ELCO & Annville-Cleona is at the top of the hill
 - Parent drop off and pick up at top of the hill

- Half-Day Programs (PM) 11:30 a.m. – 2:00 p.m.
 - Bus drop off at top of the hill
 - Bus pick up at bottom of the hill
 - Parent drop off and pick up at top of the hill
 - NL dismissal is 1:45 p.m. and Annville-Cleona dismissal is 1:50 p.m.

DAILY SCHEDULE

Full Day Programs

- Full Day Programs 8:00 a.m. – 2:00 p.m.
 - Bus drop off at bottom of the hill
 - Bus pick up at bottom of the hill
 - Parent drop off and pick up at top of the hill
 - NL dismissal is 1:45 p.m. and Annville-Cleona dismissal is 1:50 p.m.

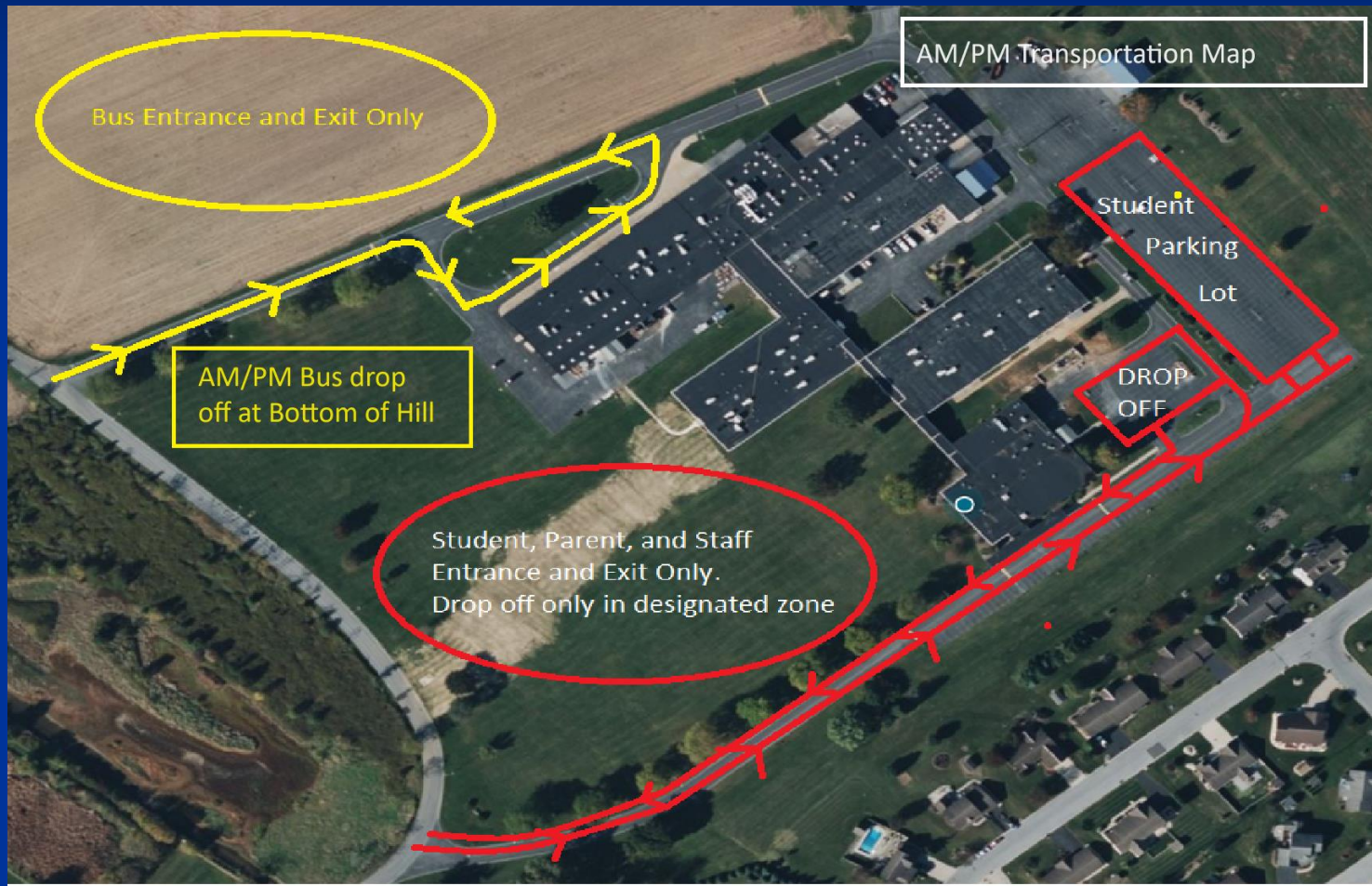
Transportation

- All high schools provide transportation to and from CTC.
 - Students are dropped off at the bottom of hill in the AM
 - Students are picking up at the bottom of the hill in the AM except ELCO and Annville Cleon High Schools, who are picked up at the top of the hill
 - Students are dropped off at the top of the hill in the PM
 - Students are picked up at the bottom of the hill in the PM

Drop Off & Pick Up

- Parents/Guardians are to drop off and pick up their child at the top of the hill in both the AM and PM.

AM/PM Map



Mid Day Map



Drivers & Parking Permit

- Students are permitted to drive to CTC with a valid driver's license.
- Must purchase a parking pass for \$10
- Parking passes can be purchased in the first few weeks of school.
- Parking is a privilege and CTC reserves the right to revoke parking privileges at any time.

Uniforms

- Students must adhere to uniform policy.
 - Students must arrive and leave in their program uniform unless otherwise given permission by the instructor.
- Link to purchase uniforms....
<https://majorleague.ink/store/lcctc/>

Grading

- 33.3%, Skill: Hands on Tasks
- 33.3%, Work Ethic: Attendance, Uniform, Safety
- 33.3%, Theory: Tests, Quiz

Lunch

- Annville-Cleona High School and Full Day students are provided lunch at the CTC.
- Lunch pin will be provided to students the first day of school.
- Money can be added to a lunch account by either providing cash or a check written out to LCCTC and given to the cafeteria cashier.

Counseling Services

■ School Counselors:

■ Mrs. Flowers

- Annville-Cleona
- Cedar Crest
- Palmyra

■ Ms. Tobias

- ELCO
- Lebanon
- Northern Lebanon
- All non-public schools

■ Services

- Personal/Peer Issues, Attendance Issues, Post Secondary Planning, Career Counseling, and Scholarships

Attendance

- Mrs. Tiru, Attendance Secretary can be reached at ktiru@lcctc.edu or 717-273-8551 ext. 2142
- Notes must be turned in within 3 days of absence for it to be excused.
- Late arrivals or early dismissals need to see Mrs. Tiru for a note.
- Educational Field Trips
 - Full Day students- approval by CTC Principal
 - Half Day students- approval by sending High School

Learning Resource Center

- Learning Resource Center Staff
 - Mr. Mehl, Special Populations Coordinator
 - Ms. Zimmerman, Special Education Facilitator
 - Ms. Robinson, Special Education Facilitator
 - Ms. Sanchez, Bilingual Aide
 - Mrs. Barry, Instructional Aide
- Services students with:
 - IEPs, 504s, ELL, Economically Disadvantaged

Social Media & the CTC

- Yes, we're online!
 - Website: www.lcctc.edu
 - Facebook: www.facebook.com/lcctc
 - Instagram: @lebanoncountctc